



# INTERNATIONAL PSYCHEDELIC CLINICAL RESEARCH

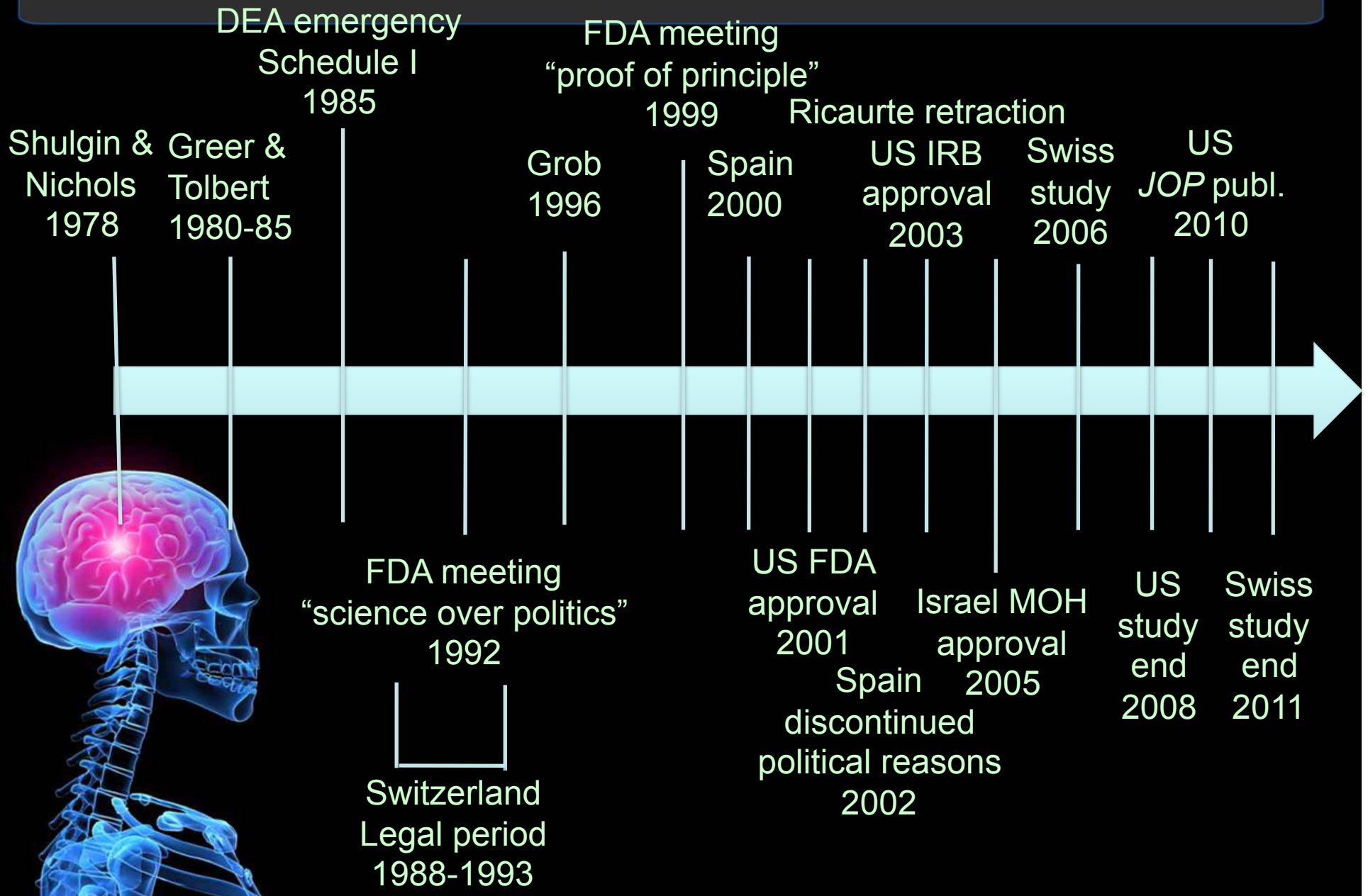
THE PAST, PRESENT AND FUTURE

BERRA YAZAR-KLOSINSKI, PH.D.

LEAD CLINICAL RESEARCH ASSOCIATE

HORIZONS 2011, NYC

# Clinical History of MDMA



# FDA recommendations for clinical trials

- ✓ Randomized
- ✓ Placebo-controlled
- ✓ Blinded
- ✓ Pilot studies: determine feasibility & refine procedures
- ✓ Single site studies: Estimate safety, tolerability, effect size
- ✓ Ultimate goal: establish Safety & Efficacy

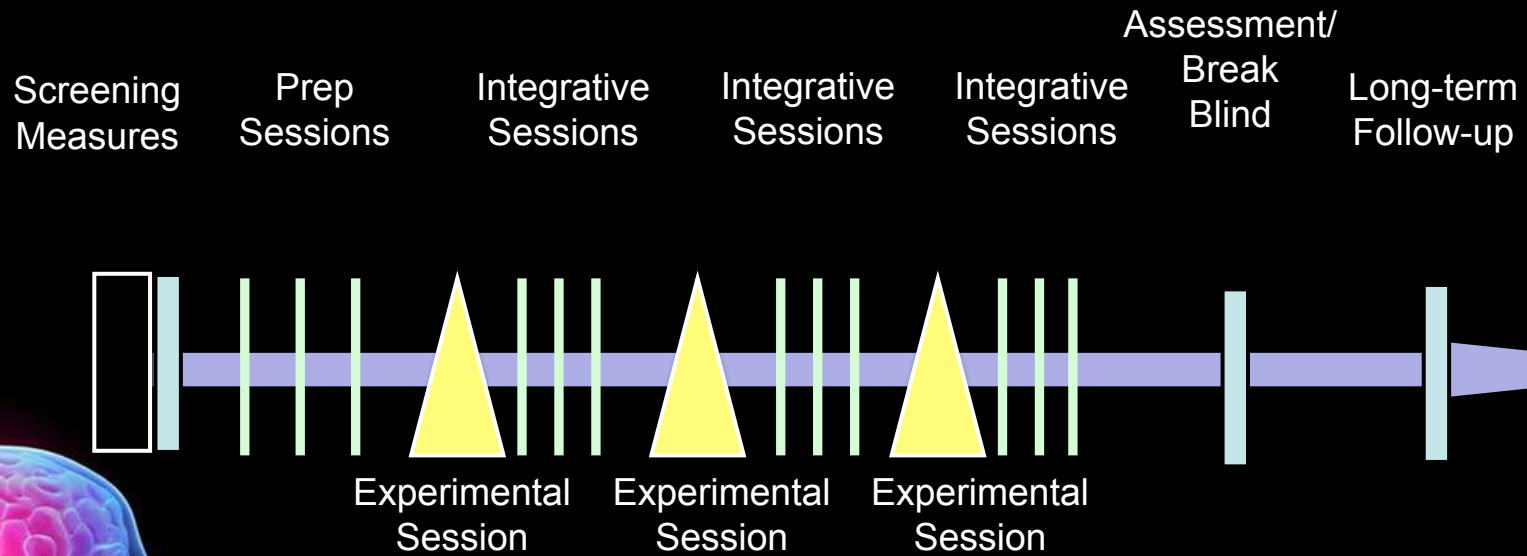


Phase 1: Healthy Volunteer

Phase 2: Safety, trends in PTSD population

Phase 3: Statistical Significance

# Clinical trial design

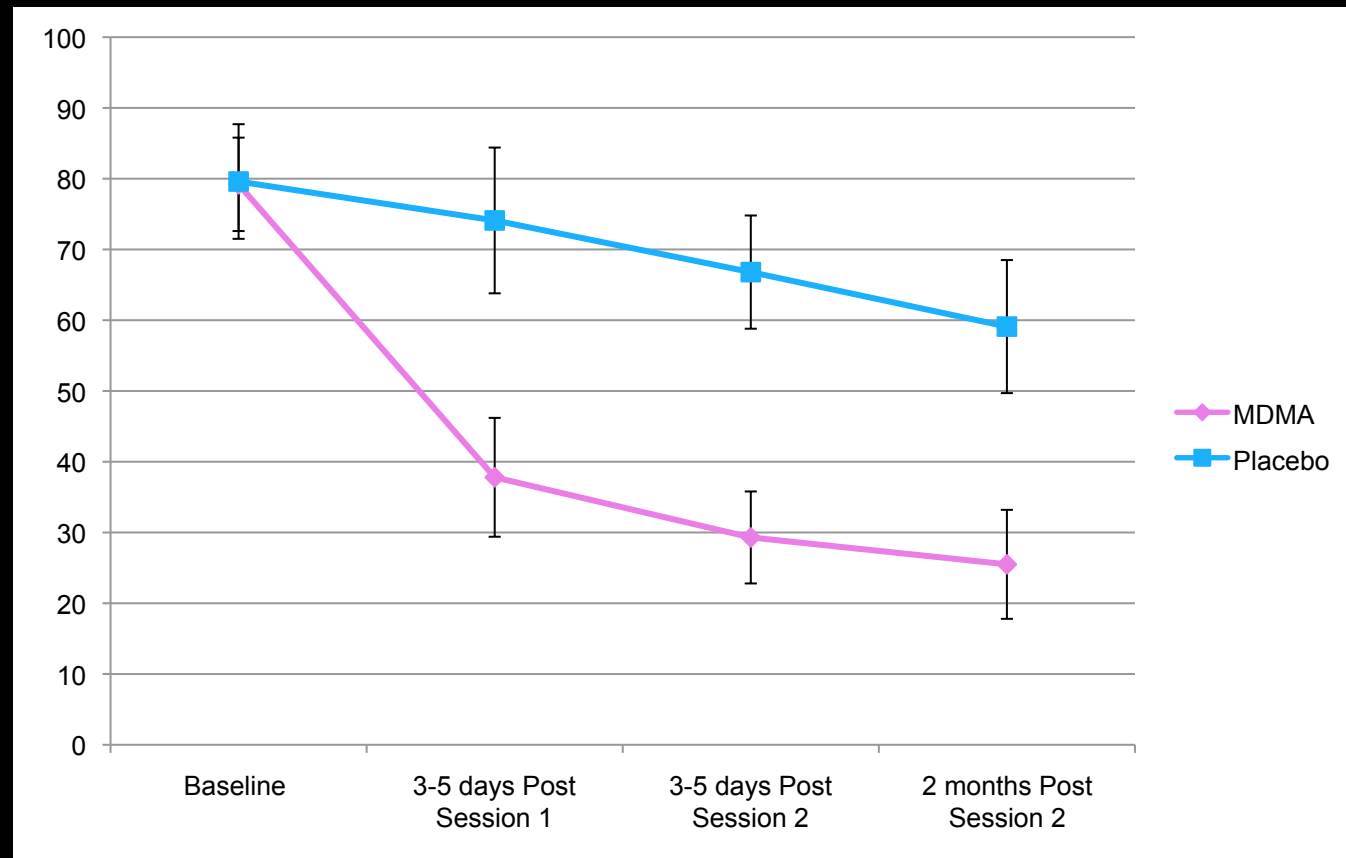


# Setting of MAPS Studies



# U.S. PTSD Severity Data

MDMA N=12  
Placebo N=8

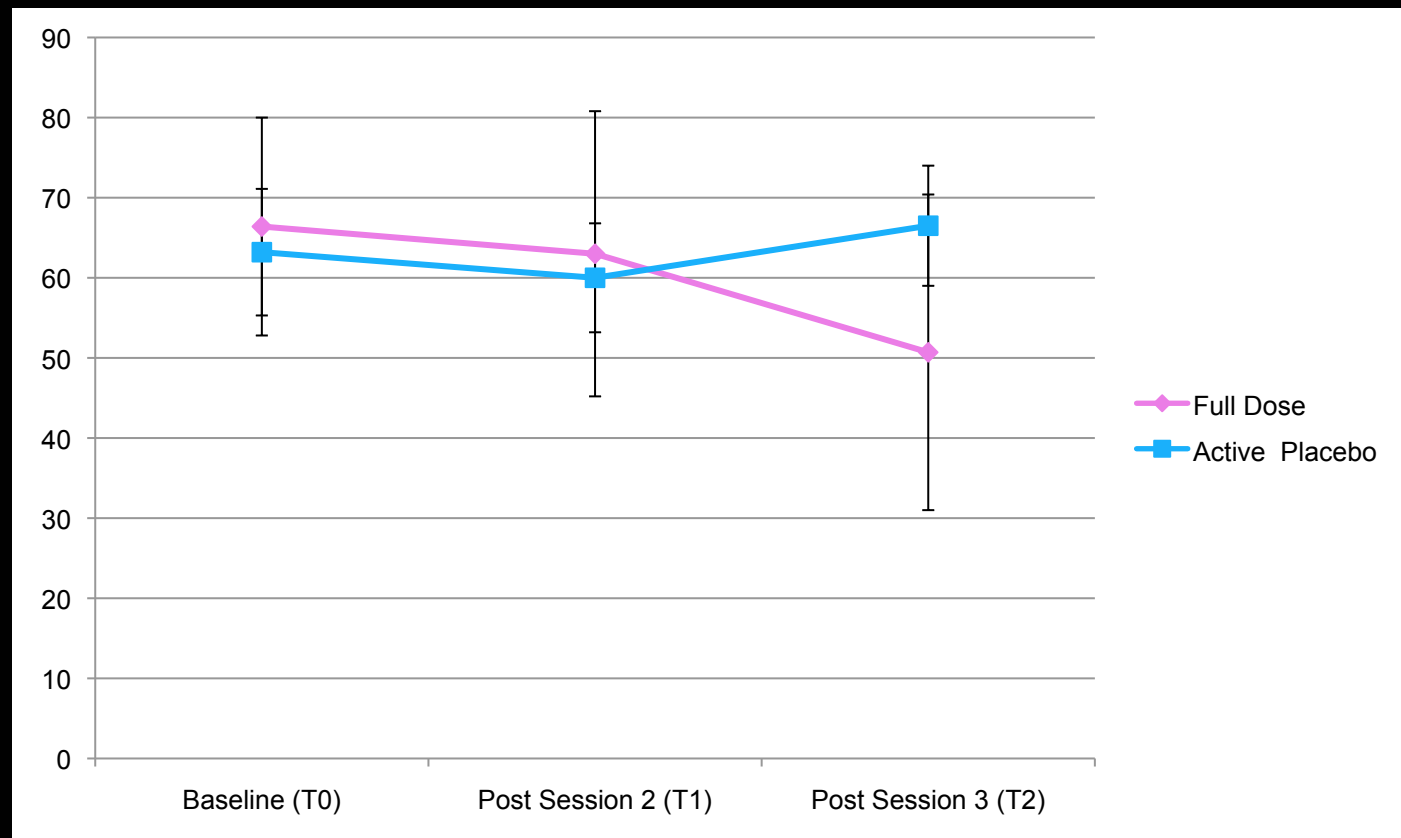


Diagnostic cut-off for PTSD: 50

SSRIs approved for PTSD had a point difference of 6-12 points compared to 35 points with MDMA-assisted psychotherapy

# Swiss PTSD Severity Data

Full dose N=8  
Act. Placebo N=4



Diagnostic cut-off for PTSD: 50  
SSRIs approved for PTSD had a point difference of 6-12 points compared to 15.6 points with MDMA-assisted psychotherapy

# U.S. & Swiss Efficacy Data

- CAPS difference between conditions is 35 in U.S. study vs. 15.6 in Swiss study
- Underlying variation much greater in Swiss sample
- Swiss therapy less non-directive
- CAPS assessments done in German for Swiss study (Schnyder et al. 2002)
- Control group very different
  - Placebo + therapy 20 pt. drop in U.S.
  - active placebo +therapy 3pt. increase in Swiss
- Symptom treatment vs. cure



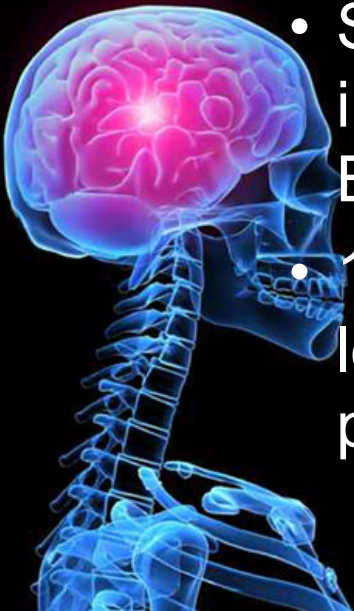
# U.S. & Swiss Safety Data

- No drug-related Serious Adverse Events
- U.S. study had 2 dropouts
  - 1 due to travel logistics
  - 1 due to relapse of depression
- Swiss study had 2 dropouts
  - Both due to exacerbation of anxiety



# Common reactions to MDMA

- All drugs have side effects
- Comparison to placebo helps determine if a reaction is a true side effect
- Different reactions on day of vs. 7 days after
  - Swiss data: (125mg vs. 25 mg) Both reported insomnia & loss of appetite as most severe on day of. Both reported fatigue & insomnia afterwards
  - 125mg: severe tight jaw, anxiety, nausea on day of & low mood, anxiety, difficulty concentrating, increased private worries



# Recommendations for PTSD trials (2008)

- ✓ Inclusive subject selection criteria
  - ✓ Age, trauma type, comorbidities, race, gender, prior therapy & medications
- ✓ Clearly defined primary & secondary measures
- ✓ Control: clinically relevant alternative
- ✓ Monitoring data quality
- ✓ Treatment Manual
- ✓ Video therapy sessions for adherence
- ✓ Ensure inter-rater reliability



# Current trials

- MP-8: U.S. Vet Study (5/16 enrolled)
  - 30mg vs. 75mg vs. 125mg MDMA
  - 3X blind
  - 3 MDMA sessions
  - Ongoing adherence analysis
  - Vets with military service-related PTSD
  - 50% male/female



# Current trials

- MP-9: Israel Study (0/10 enrolled)
  - 25mg vs. 125mg MDMA
  - Adherence analysis in lead-in
  - All types of PTSD
  - Gender balance unspecified
  - 2 MDMA sessions
  - 3 therapy teams
  - CAPS in Hebrew



# Project Development

- MP-4: Vancouver study
  - Regulatory approval process delayed
  - MDMA Import License imminent
  - 25mg vs. 125mg MDMA
  - 3 MDMA sessions
  - All types of PTSD (police preferred)
  - Gender balance unspecified



# Project Development

- MP-7: Jordan Study
  - Regulatory approval difficult
  - 40mg vs. 125mg MDMA
  - 3 MDMA sessions
  - Iraqi refugees
  - CAPS in Arabic



# MDMA for High-functioning Autism?

- Request for Proposals
- Combination of drug + behavioral intervention
- Goal is to obtain NIH funding
- Can an increase in empathy help with socialization & community integration?



# Phase 3: MDMA/PTSD Studies

- 2 studies (Europe/Middle East & U.S.)
- Multi-site (10 sites/ study)
- ~300 patients/study
- ~20 therapist teams/study
- Associated study staff
  - Independent raters, attendants, study coordinators



- The Intern Study: testing out Phase 3 with intern + experienced therapist teams
- Psychedelic Education Program

# The Post-Approval World

Enjoy a Mental Health Retreat at a MAPS Clinic Near You!

