

cal tools that would enable them to create more skillful expressions of the psychedelic experience and alternative realities and perspectives.

Robert's association with MAPS and the rest of the psychedelic research community emerged through our mutual participation in their various events throughout the years. We've crossed paths many times with MAPS founder Rick Doblin at celebrations and community events all over this planet. Our annual visits to Europe brought us to meet "the good doctor" in Switzerland, and were always great highlights in our life. It was Robert's distinct pleasure to create a special portrait of Dr. Hofmann, which MAPS now uses as one of its cornerstone images connecting visionary art and psychedelic research.

Venosa's deep personal connections to the indigenous medicine community were a blessing on many levels, facilitating both his spiritual and artistic growth. Artistically,



"Portrait of Albert Hofmann" by Robert Venosa.  
Oil on canvas, 35"x34", 2006.  
Prints available at [www.maps.org/venosa](http://www.maps.org/venosa).

he was immensely inspired by the numinous quality and breathtaking visions of the "mother's realm," while his paintings took on a range of color he had never tackled before.

On a spiritual level, he experienced yet another personal renaissance. Robert was diagnosed with prostate cancer in 2003, and doctors told him he had just three months to live. The ayahuasca vine became one of his great allies in cleansing his body and strengthening his lifeline. His ayahuasca experiences helped him sort his priorities, to see what was most

essential at that point in his life, deepened his spiritual connections, and solidified his faith that there is continuation after death. Contrary to the doctors' predictions, he enjoyed another very active and full eight and a half years of life.

Thank you, Robert, for showing us all what's possible when we're unafraid to hold true to what we believe in most. •

*"The role of the artist means belonging to a unique, exciting gang of outlaws. It will always be the explorers, artists, poets, curious intellectuals, musicians, and all the other existential samurai who are creatively courageous, who desire to advance their yearnings for higher truth, and who will take the leap of faith into the unknown. The art and architecture of every great, or minor, culture, was given its visual power through the artist, and, in fact, culture itself has always been defined through the artist's creativity. The artist has always been the catalyst for change."*

—Robert Venosa

## MAPS: WHO WE ARE

Our mission is (1) to treat conditions for which conventional medicines provide limited relief—such as posttraumatic stress disorder (PTSD), pain, drug dependence, anxiety and depression associated with end-of-life issues—by developing psychedelics and marijuana into prescription medicines; (2) to cure many thousands of people by building a network of clinics where treatments can be provided; and (3) to educate the public honestly about the risks and benefits of psychedelics and marijuana.

If you can even faintly imagine a cultural reintegration of the use of psychedelics and the states of mind they engender, please join MAPS in supporting the expansion of scientific knowledge in this area. Progress is possible with the support of those who care enough to take individual and collective action.

[www.maps.org/donate](http://www.maps.org/donate)



©2011 Multidisciplinary Association for Psychedelic Studies, Inc. [MAPS]  
MAPS, 309 Cedar Street, #2323,  
Santa Cruz, CA 95060 USA  
Phone: +1 831-429-6362  
Fax: +1 831-429-6370  
E-mail: [askmaps@maps.org](mailto:askmaps@maps.org)  
[www.maps.org](http://www.maps.org)



**Rick Doblin, Ph.D., Founder and Executive Director**, earned his Ph.D. in Public Policy from the Kennedy School of Government at Harvard University. Doblin was also in Stan and Christina Grof's first training group to receive certification as a Holotropic Breathwork practitioner.



**Michael Mithoefer, M.D., Clinical Investigator/Medical Monitor** is a psychiatrist practicing in Charleston, SC, where he divides his time between clinical research and outpatient clinical practice specializing in treating posttraumatic stress disorder (PTSD) with an emphasis on experiential methods of psychotherapy. He is a certified Holotropic Breathwork Facilitator and trained in EMDR and Internal Family Systems Therapy.



**Annie Mithoefer, B.S.N., MDMA/PTSD Study Co-Investigator** is a Registered Nurse who lives in Charleston, SC where she divides her time between clinical research and outpatient clinical practice specializing in treating posttraumatic stress disorder (PTSD) with an emphasis on experiential methods of psychotherapy. She is a certified Grof Holotropic Breathwork Practitioner and is trained in Hakomi Therapy.



**Valerie Mojeiko, Deputy Director**, earned her B.A. from the California Institute of Integral Studies. In her work with MAPS' psychedelic harm reduction project, she has trained over 200 volunteers with skills for helping people who are undergoing psychedelic emergencies.



**Brian Brown, MAPS Development Associate** studied medical anthropology and visual culture at the University of California, Santa Cruz where he researched social prospects for psychedelics using a community centered approach. Brian is now developing MAPS' membership base by assisting with education and outreach efforts.



**Kynthia Brunette, Volunteer Coordinator** has a B.A. in Political Science, an M.S. in Human Computer Interaction, and a lifelong interest in models of personality and development. Her interests have evolved over the years into a fascination with the design of institutions, organizations, and experiences that serve as vehicles for transpersonal growth.



**Brad Burge, M.A., Director of Communications**, earned his B.A. in Communication and Psychology from Stanford University in 2005 and his M.A. in Communication from the University of California, San Diego in 2009. His graduate work focused on the political, scientific, and cultural changes required to make illicit drugs into legitimate medicines.



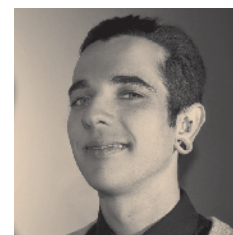
**Shannon Clare, Receptionist**, majored in Cultural Anthropology at the University of California, Santa Cruz and is now training in Integral Counseling Psychology at the California Institute for Integral Studies (CIIS). She values curiosity, communication, and creating community.



**Amy Emerson, Clinical Program Manager**, earned her B.S. in genetics and cell biology from Washington State University. She has worked in clinical development and research for the last 15 years in the fields of immunology, oncology, and in vaccine development. Amy has worked with MAPS as a volunteer since 2003 facilitating the development of the MDMA clinical program.



**Ilsa Jerome, Research and Information Specialist**, earned a Ph.D. in psychology from the University of Maryland. She helps MAPS and other researchers design studies, gathers information on study drugs by keeping abreast of the current literature and discussion with other researchers, creates and maintains documents related to MAPS-supported studies, and helps support the MAPS psychedelic literature bibliography.



**Josh Mojeiko, Director of Finance and Information Technology**, earned his B.A. in Philosophy and Religion from New College of Florida and is a chef, musician, poet, and technologist. He immensely enjoys the depths of existential experience.



**Linnae Ponté, Executive and Clinical Research Assistant**, earned her BA in Biological Psychology from New College of Florida. She's assisted data collection and analysis at University of South Florida's Cardiovascular Psychophysiology Laboratory, MOTE Marine Mammal Aquarium Psychophysical Laboratory, East-West College of Natural Medicine, and the West Mamprusi Civic Union in Ghana, West Africa.



**Brian Wallace, Director of Field Development**, studied neuroscience, philosophy, and medical sociology at Cabrillo College and UC Santa Cruz. Before coming to MAPS, Brian was a naturalist, outdoor educator, and certified Wilderness-EMT. Brian assists individual supporters in identifying and cultivating their own capacity to give. He also coordinates artist relations and artwork sales.



**Berra Yazar-Klosinski, Clinical Research Associate**, earned her Ph.D. in Molecular, Cell, and Developmental Biology from University of California Santa Cruz, where she also served as president of the Graduate Student Association. After attending Stanford University, she worked as a Research Associate with Geron Corporation and Millennium Pharmaceuticals.



**Virginia Wright, Director of Marketing and Development** brings a wealth of fundraising experience to MAPS. Her firm Wright & Associates has provided strategic thinking, marketing, and fundraising services to arts organizations and cities throughout Northern California and Nevada. She received her B.A. in International Relations from San Francisco State University, and her M.B.A. from Santa Clara University.