



Rick

Rick Doblin, MAPS founder and President, earned his Ph.D. in Public Policy from the Kennedy School of Government at Harvard University. Doblin was also in Stan and Christina Grof's first training group to receive certification as a Holotropic Breathwork practitioner.



Valerie

Valerie Mojeiko, Deputy Director, coordinates projects at MAPS' headquarters and facilitates psychedelic research around the globe. Formally educated at New College of Florida and the California Institute of Integral Studies.



Josh

Josh Sonstroem, Accounting and Information Technology, earned his B.A. in Philosophy and Religion from New College of Florida and is a chef, musician, poet and technologist. He immensely enjoys the depths of existential experience.



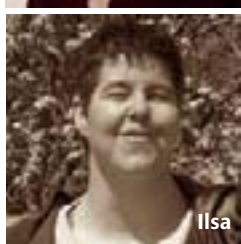
Randy

Randolph Hencken, Communication and Marketing Director, earned his M.A. in Communication, and his B.S. in Business Administration from San Diego State University, where he focused all of his graduate studies on drug policy issues. He was the founder and president of the university's chapter of Students for Sensible Drug Policy, and he interned for the Drug Policy Alliance in San Diego. Formerly he was the program coordinator at the Ibogaine Association in Mexico.



Jalene

Jalene Otto, Membership and Sales Coordinator, studied philosophy and sociology at Cabrillo College and UC Santa Cruz. She is a story weaver and a mother.



Ilsa

Ilsa Jerome, Research and Information Specialist, earned a Ph.D. in psychology from the University of Maryland. She helps MAPS and other researchers design studies, gathers information on study drugs by keeping abreast of the current literature and discussion with other researchers, creates and maintains documents related to MAPS-supported studies, and helps support the MAPS psychedelic literature bibliography.



Amy

Amy Emerson, Clinical Program Manager, earned her B.S. in genetics and cell biology from Washington State University. She has worked in clinical development and research for the last 15 years in the fields of immunology, oncology and most recently in vaccine development. Amy has worked with MAPS as a volunteer since 2003 facilitating the development of the MDMA clinical program. She is currently working as the clinical program manager and is involved with creating the structure needed to support the growing needs of the clinical operations group and MAPS clinical research studies.



Brian

Brian Wallace, Events and Outreach Coordinator, studied neuroscience, philosophy, and medical sociology at a host of universities, the latest being UC Santa Cruz. As a longtime advocate for the dissemination of accurate, unbiased information with respect to psychoactive drugs and other medicines, Brian is right at home doing outreach and education on behalf of MAPS at music festivals and medical or policy conferences, and in the digital world through various Web 2.0 frameworks.

MAPS: Who We Are

Our mission is 1) to treat conditions for which conventional medicines provide limited relief—such as posttraumatic stress disorder (PTSD), pain, drug dependence, anxiety and depression associated with end-of-life issues—by developing psychedelics and marijuana into prescription medicines; 2) to cure many thousands of people by building a network of clinics where treatments can be provided; and 3) to educate the public honestly about the risks and benefits of psychedelics and marijuana.

“Most of the things worth doing in the world had been declared impossible before they were done.”

— Louis D. Brandeis

If you can even faintly imagine a cultural reintegration of the use of psychedelics and the states of mind they engender, please join MAPS in supporting the expansion of scientific knowledge in this area. Progress is possible with the support of those who care enough to take individual and collective action.

The MAPS Bulletin

Each MAPS Bulletin reports on MAPS research in progress. In addition to reporting on research both in the United States and abroad, the Bulletin may include feature articles, reports on conferences and book reviews. Issues raised in letters, calls, and e-mail from MAPS members may also be addressed, as may political developments that affect psychedelic research and use.



MAPS
MULTIDISCIPLINARY ASSOCIATION FOR PSYCHEDELIC STUDIES

©2009 Multidisciplinary Association
for Psychedelic Studies, Inc.
MAPS

309 Cedar Street, #2323,
Santa Cruz, CA 95060
Phone: 831-429-6362
Fax: 831-429-6370

E-mail: askmaps@maps.org
Web: www.maps.org