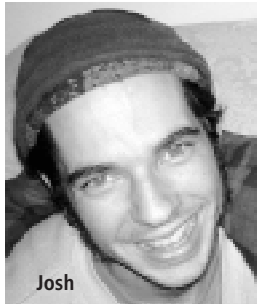




Rick Doblin, MAPS founder and President, earned his Ph.D. in Public Policy from the Kennedy School of Government at Harvard University. Doblin was also in Stan and Christina Grof's first training group to receive certification as a Holotropic Breathwork practitioner.



Valerie Mojeiko, Director of Operations and Clinical Research Associate, coordinates projects at MAPS' Love Creek office and facilitates psychedelic research around the globe. She is currently a student at the California Institute of Integral Studies.



Josh Sonstroem, Technology Specialist and Events Coordinator, earned his B.A. in Philosophy and Religion from New College of Florida and is a chef, musician, poet, technologist, and masseuse. He immensely enjoys the depths of existential experience.



Jag Davies, Director of Communications, has been working at MAPS since 2003, where he coordinates outreach projects, research advocacy, and educational materials, including the *MAPS Bulletin*, monthly email news, and website content.



Sarah Hufford, Membership and Sales Manager, joined the MAPS staff in the Fall of 2005, after receiving her bachelor's degree in psychology from New College of Florida. She values psychedelics and marijuana as powerful medicines, and hopes to help integrate their safe and conscientious use into our society.



Troy Dayton has worked in the drug policy reform movement for over 12 years. He is committed to removing coercion from society and views the Drug War as the most insidious example of government force. Troy's mission is to help people who agree with drug policy reform find their individual capacity to make a difference.

MAPS: Who We Are

MAPS IS A MEMBERSHIP-BASED ORGANIZATION working to assist researchers worldwide to design, fund, conduct, obtain governmental approval for, and report on psychedelic research in humans. Founded in 1986, MAPS is an IRS approved 501 (c)(3) non-profit corporation funded by tax-deductible donations from members.

"Most of the things worth doing in the world
had been declared impossible

before they were done."

– Louis D. Brandeis

If you can even faintly imagine a cultural reintegration of the use of psychedelics and the states of mind they engender, please join MAPS in supporting the expansion of scientific knowledge in this area. Progress is possible with the support of those who care enough to take individual and collective action.

THE MAPS BULLETIN

Each *Bulletin* reports on MAPS research in progress. In addition to reporting on research both in the United States and abroad, the Bulletin may include feature articles, reports on conferences, book reviews, Heffter Research Institute updates, and the Hofmann Report. Issues raised in letters, calls, and e-mail from MAPS members may also be addressed, as may political developments that affect psychedelic research and use.



©2007 Multidisciplinary Association
for Psychedelic Studies, Inc. (MAPS)
10424 Love Creek Road,
Ben Lomond, CA 95005
Phone: 831-336-4325
Fax: 831-336-3665
E-mail: askmaps@maps.org
Web: www.maps.org